

Success Story: Integrating Cloud Content Services for a Modern AI-ready Experience

PRESENTERS: ANNA DAVIS

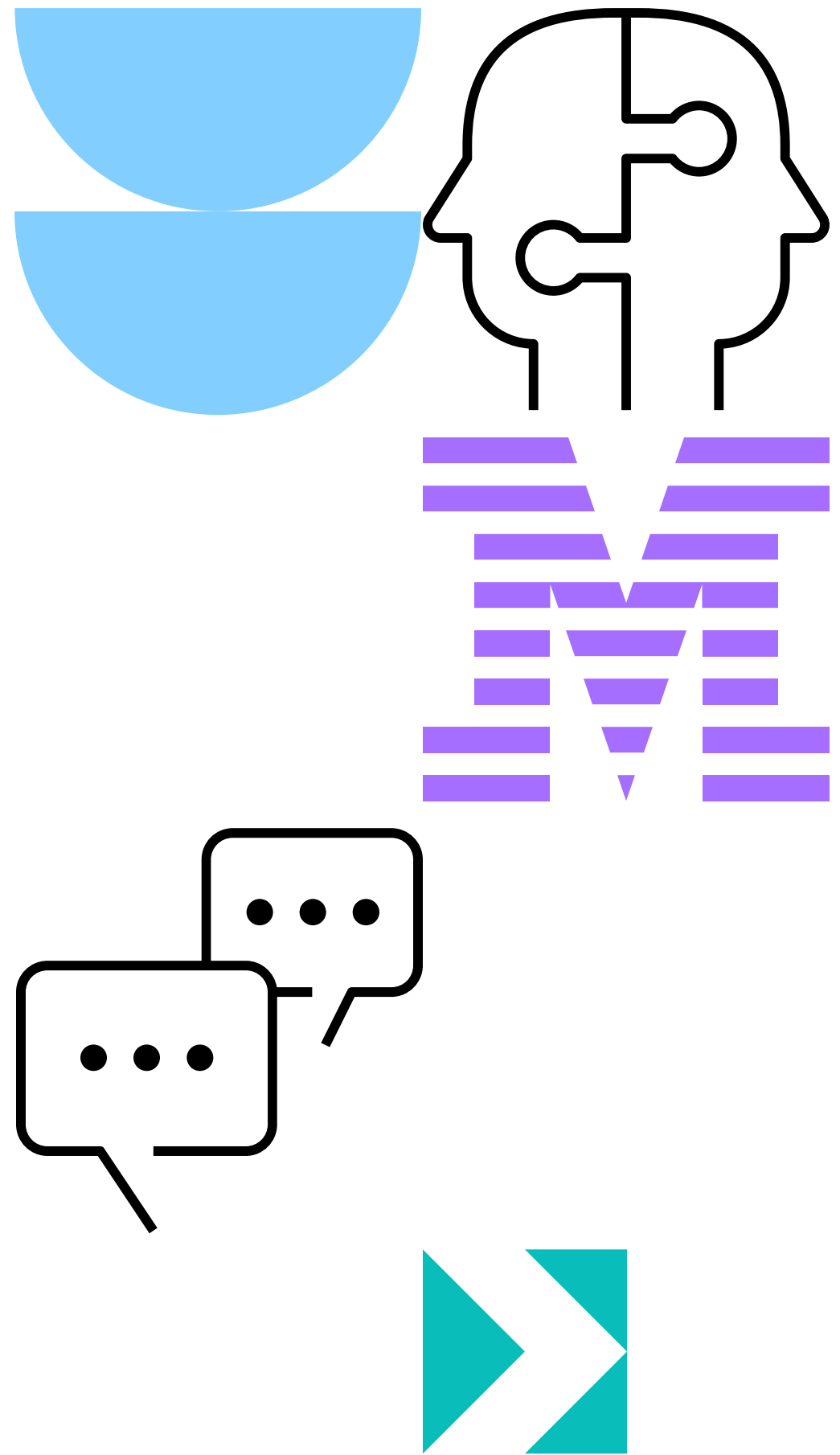
PRUDENTIAL, VP & PRODUCT OWNER

TIM PASCARELLA

IBM, SENIOR BUSINESS AUTOMATION TECHNICAL SPECIALIST



Agenda



01 Cloud Migration Story

02 Lessons Learned

03 Expanding Utilization

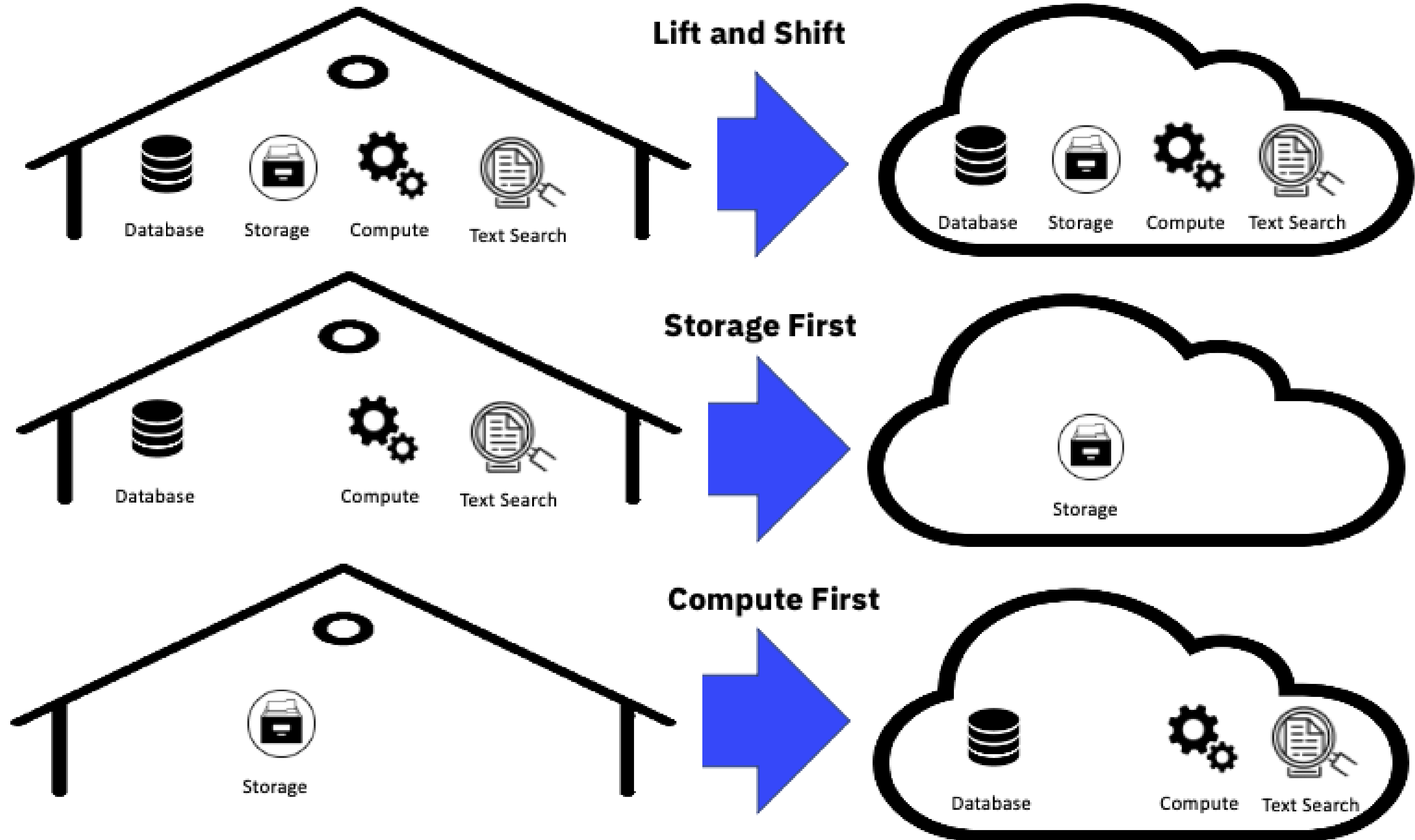
04 Now What?

05 Q&A

Cloud Migration Story

Common Migration Scenarios:

- Lift and Shift
- Storage First
- Compute First



Cloud Migration Story: Scope of Effort

161M

Documents & ~60TB to migrate from CM8 environment.

- Multiple weekend rollouts by LOB
- EDM Service Layer updated to use GraphQL
- 2,000+ Navigator Users
- Multiple Navigator plug-ins deployed to cloud

1.2B

Documents & ~170TB to migrate from multiple Documentum Docbases

- 45+ business applications
- 9 docbases
- Multiple weekend rollouts by LOB
- SharePoint Integration
- Custom Reports
- Loose integration controls

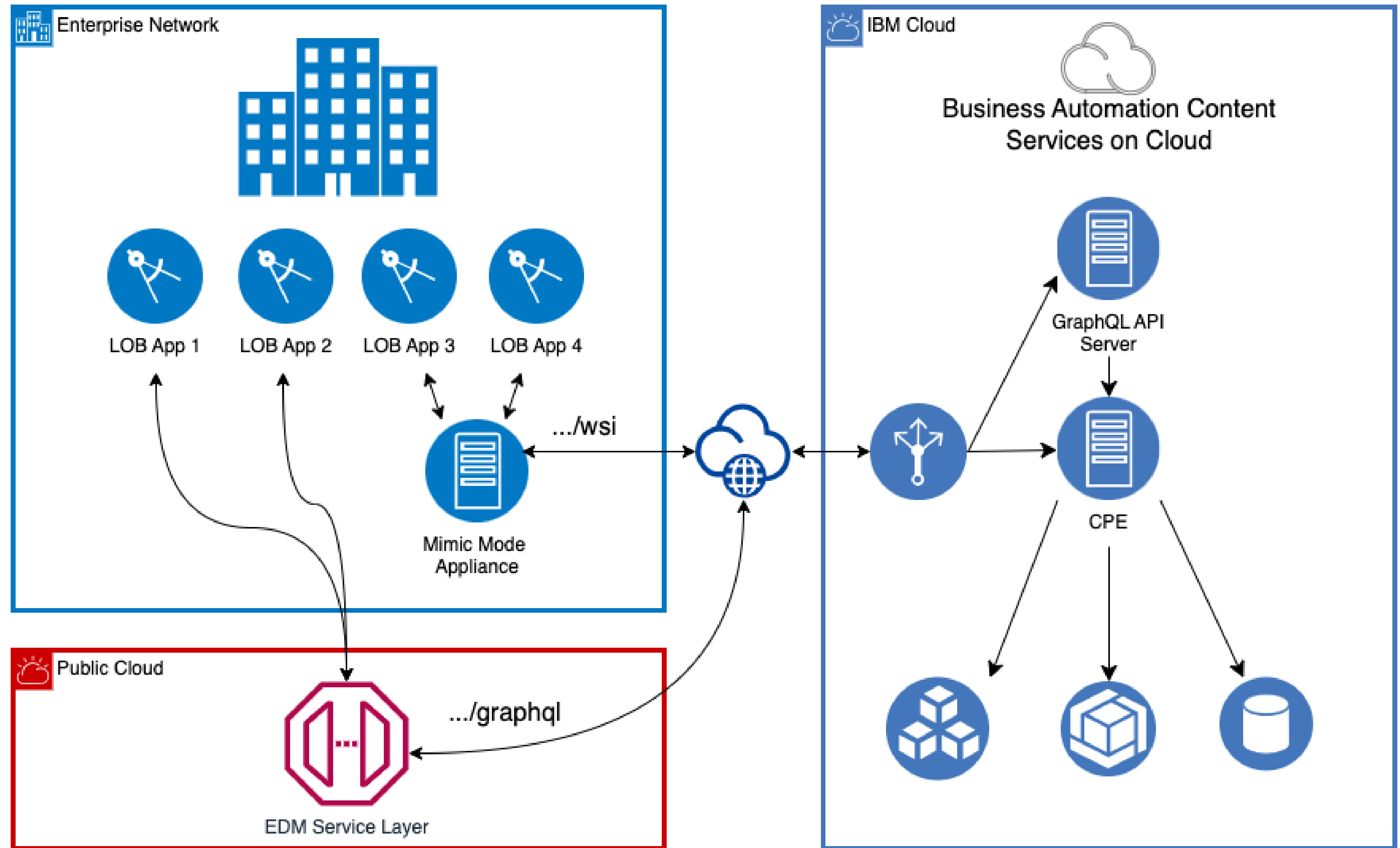
700M

Documents & ~65TB to migrate from legacy Unisys environment.

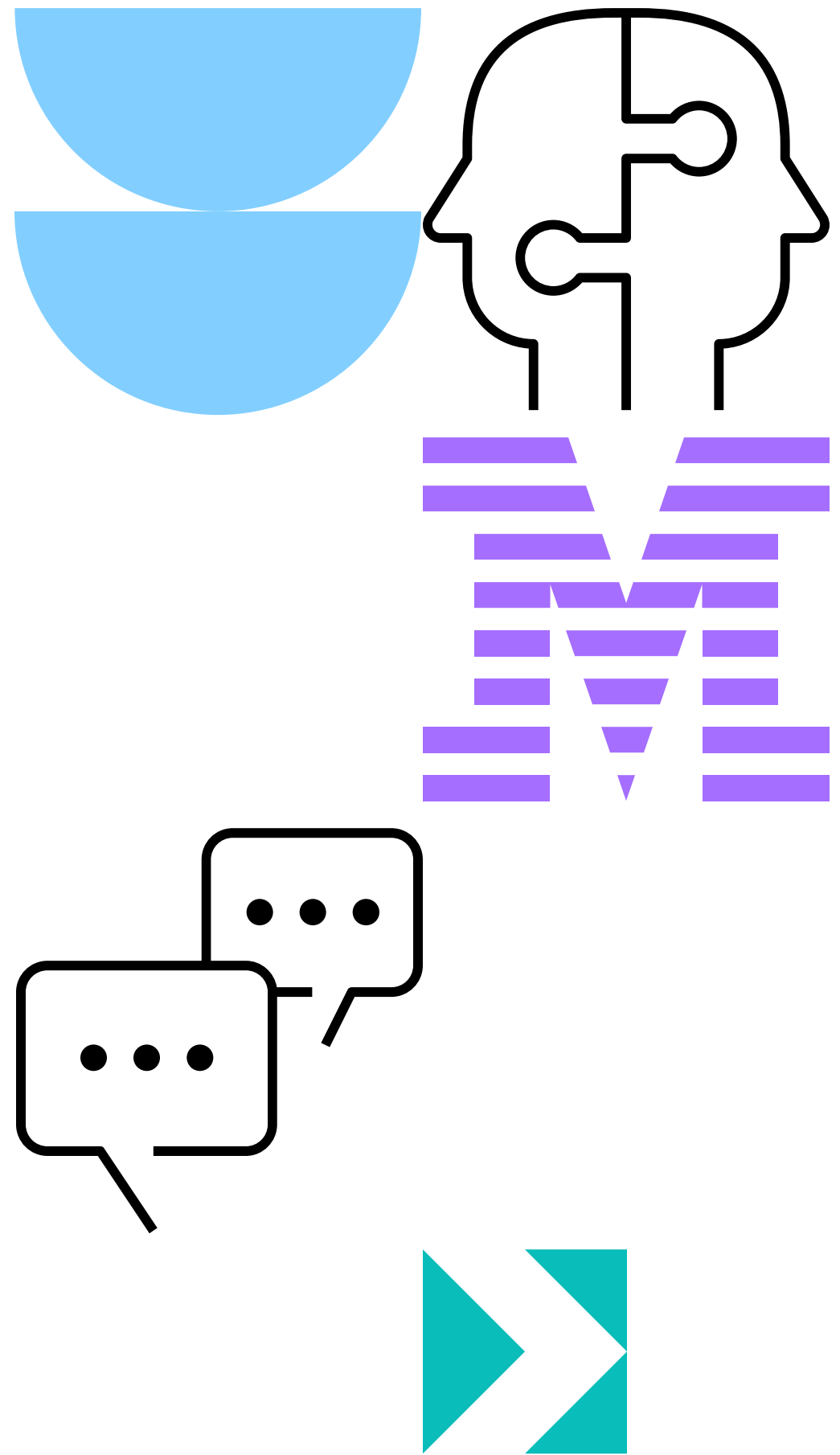
- Legacy repository with source code
- Closed API
- Unique document data model and structure
- Unique security model

High Level Architecture

EDM Service Layer:
LOB apps utilize the EDM Service Layer that routes calls via the FileNet GraphQL API



Agenda



- 01 Cloud Migration Story
- 02 Lessons Learned
- 03 Expanding Utilization
- 04 Now What?
- 05 Q&A

Lessons Learned... To Date



Review current state **in totality** and design a roll-out plan.



Select a migration partner. **Experience matters.**



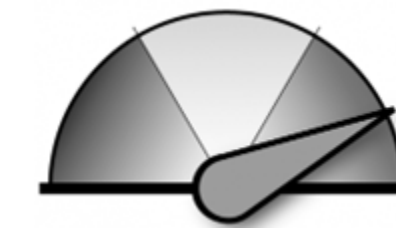
Prepare for migration. Refine roll-out plan and **be ready for the unexpected.**



Begin migration. Remember **no two migrations are alike.**

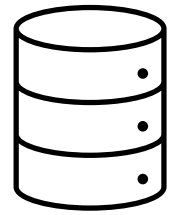


Testing, **Testing, TESTING!!!**



Monitor everything. No one ever complains that they have too much visibility.

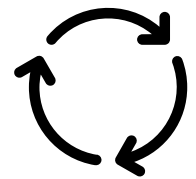
Lessons Learned... To Date



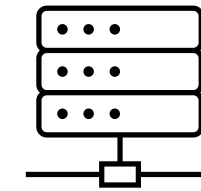
Separate [object stores](#) to
achieve best throughput



Refine the [content validation](#)
strategy

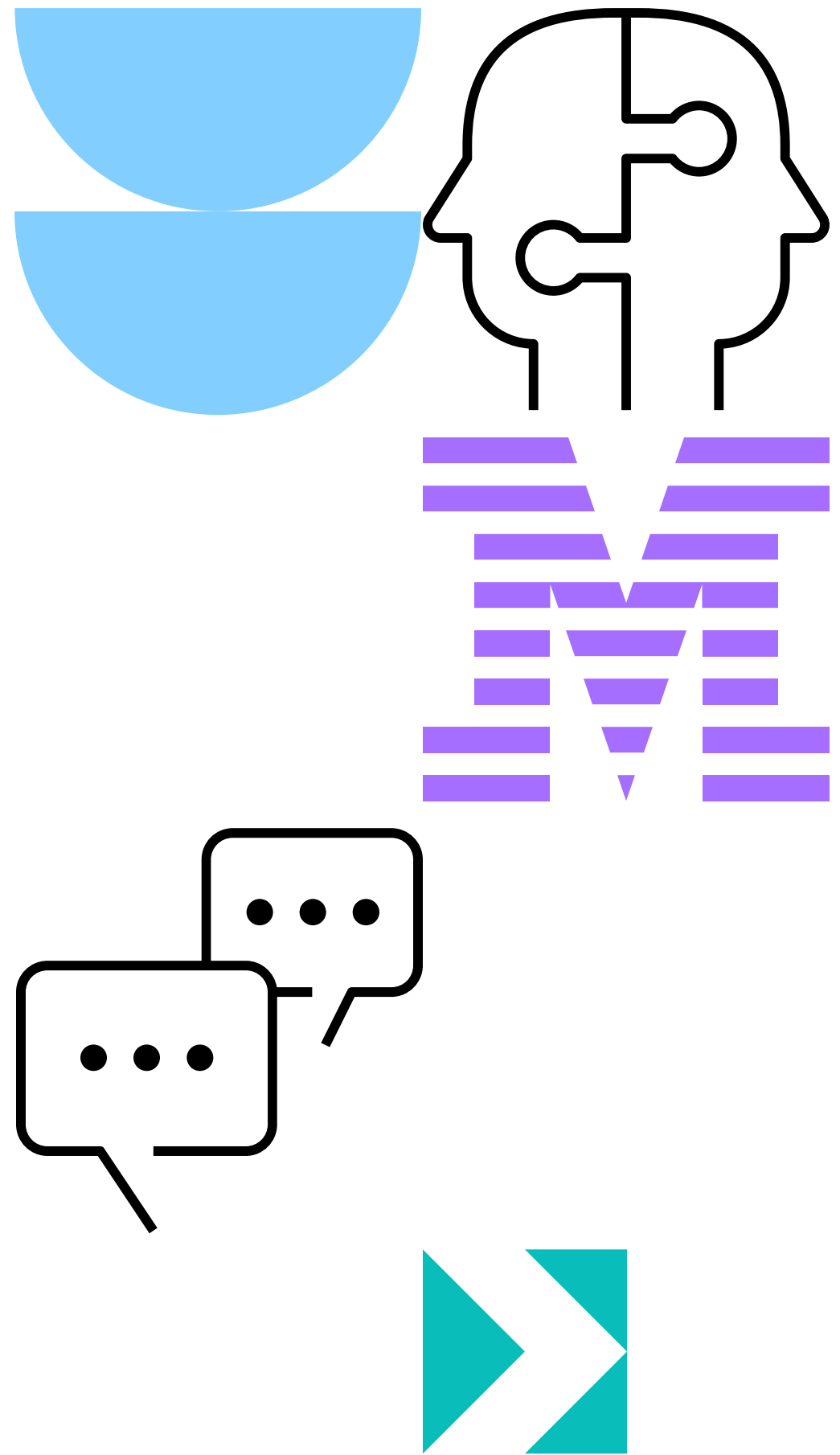


Ensure [retry logic](#) is
implemented at appropriate
layers



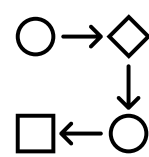
Consider a temporary [bare metal](#)
DB server configuration

Agenda

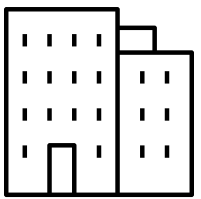


- 01 Cloud Migration Story
- 02 Lessons Learned
- 03 Expanding Utilization
- 04 Now What?
- 05 Q&A

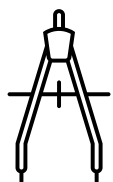
Expanding Utilization: Standardization



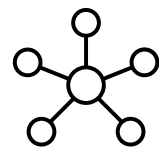
Do not embedded business logic to allow for a **thin** and **product agnostic** service layer



Insulate business applications from direct FileNet API access



Consistent architecture and framework at the enterprise level for connectivity to Document Services using the IBM FileNet GraphQL API



Provide a common interface using **event driven** and **RESTful APIs** for applications to connect with Document Services for all operations

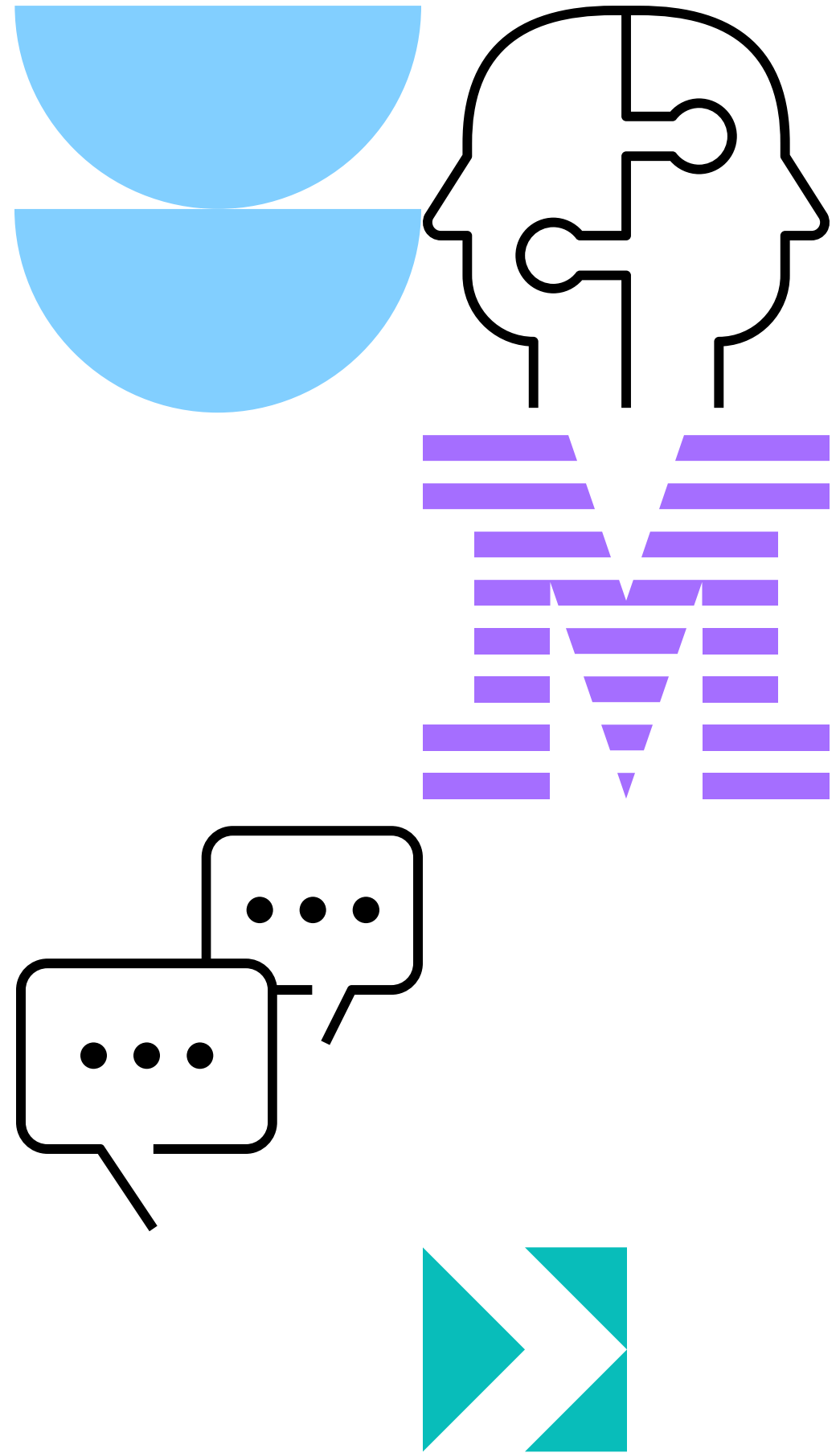


Remove the need to **distribute and install** FileNet API binaries by all business applications to access FileNet



Services deployed in AWS cloud providing **scalability** and **high availability**

Agenda



- 01 Cloud Migration Story
- 02 Lessons Learned
- 03 Expanding Utilization
- 04 Now What?
- 05 Q&A

Now What?



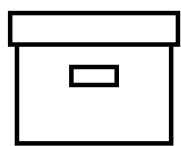
Intelligent Content

Bring content, people, and processes together to drive **automation** and **personalization** of content at scale



Content Assistant

Get the **right** answer in seconds, tailored to **your documents**



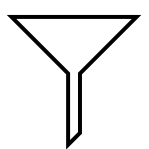
Records Management

Maintain auditability of content in accordance with **corporate governance** and **regulatory obligations**



Data Science

Expose enterprise content to data science experts to drive **product decisions** and better **support customers**.



Enhanced Classification

Utilize AI techniques to **enhance** existing classification and **reduce manual** effort required to maintain the taxonomy.



Text to Action

Use **conversational** techniques to **act** on content, **invoke** workflows, etc...

Q&A and Thank You!



Anna Davis

Prudential, VP & Product Owner

anna.davis@prudential.com



Tim Pascarella

IBM, Senior Business Automation Technical Specialist

tmpascar@us.ibm.com

Notices and disclaimers

© 2025 International Business Machines Corporation.
All rights reserved.

This document is distributed “as is” without any warranty, either express or implied. In no event shall IBM be liable for any damage arising from the use of this information, including but not limited to, loss of data, business interruption, loss of profit or loss of opportunity.

Customer examples are presented as illustrations of how those customers have used IBM products and the results they may have achieved. Actual performance, cost, savings or other results in other operating environments may vary.

Workshops, sessions and associated materials may have been prepared by independent session speakers, and do not necessarily reflect the views of IBM.

Not all offerings are available in every country in which IBM operates.

Any statements regarding IBM’s future direction, intent or product plans are subject to change or withdrawal without notice.

IBM, the IBM logo, and ibm.com are trademarks of International Business Machines Corporation, registered in many jurisdictions worldwide. Other product and service names might be trademarks of IBM or other companies. A current list of IBM trademarks is available on the Web at “Copyright and trademark information” at: www.ibm.com/legal/copytrade.shtml.

Certain comments made in this presentation may be characterized as forward looking under the Private Securities Litigation Reform Act of 1995.

Forward-looking statements are based on the company’s current assumptions regarding future business and financial performance. Those statements by their nature address matters that are uncertain to different degrees and involve a number of factors that could cause actual results to differ materially. Additional information concerning these factors is contained in the Company’s filings with the SEC.

Copies are available from the SEC, from the IBM website, or from IBM Investor Relations.

Any forward-looking statement made during this presentation speaks only as of the date on which it is made. The company assumes no obligation to update or revise any forward-looking statements except as required by law; these charts and the associated remarks and comments are integrally related and are intended to be presented and understood together.

