

# Claim Your Seat at the AI Governance Table

COLLABORATING ON THE DEVELOPMENT OF  
POLICY AND STANDARDS



# Poll

Have you been using AI to actually carry out IM aspects of your role?



# AGENDA

Introduction

Structuring Policy Instruments

Considerations Around AI

Policy Development

Group work: Staking a Claim

Next Steps



## Office Manual

The **statute** requires us to bake cookies.

We are **more concerned with taste than size** and **federal regulations** limit the size of each cookie to 10 cm.

Use the recipe from **Procedure #42A**. Don't forget to add cinnamon at the end.

# Office Manual

The **statute** requires us to bake cookies.

We are **more concerned with taste than size** and **federal regulations** limit the size of each cookie to 10 cm.

Use the recipe from **Procedure #42A.** Don't forget to add cinnamon at the end.

Decisions made **OUTSIDE**  
your organization

## Office Manual SOURCES OF CONTENT

What you need to  
know to do your job.

Decisions made **INSIDE**  
your organization

### EXTERNAL AUTHORITIES

Statutes  
Regulations  
Court Cases  
Governing Bodies

### OTHER SOURCES

International Standards  
Technical Limitations  
Science  
Facts

### FOUNDATIONAL DOCUMENTS

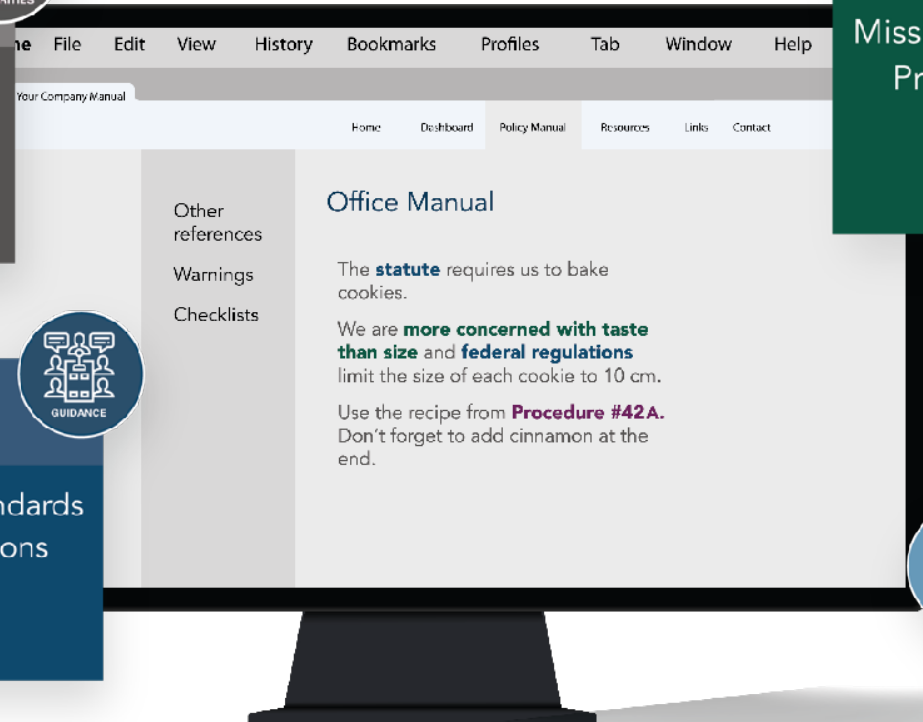
Mission | Vision | Values  
Principles | Strategies  
Governance  
Lexicon

### INTERNAL AUTHORITIES

Policies  
Standards  
Procedures  
Forms

### EXPERTISE

Analysis  
Instruction  
Illustrations  
Advice



# Policy

- household ingredients
- 20 mins prep
- look elegant

## Standard

- 4 onions
- 1 cup barley
- ¼ cup olive oil
- 3 cans chick peas

## Procedure

- Heat the oven to 350
- sauté the onions in the olive oil for 5 minutes
- Add 1 can of chick peas slowly.

## Instructions

1. Make your bed
2. Put your clothes in the closet
3. Tidy your desk
4. Pick your toys up off the floor.

## Standard

Here's what a clean room looks like:

- The bed is made
- Clothes are in the closet
- The surface of the desk is tidy
- The floor is clear of all items except furniture.



# KEY CONSIDERATIONS FOR AI



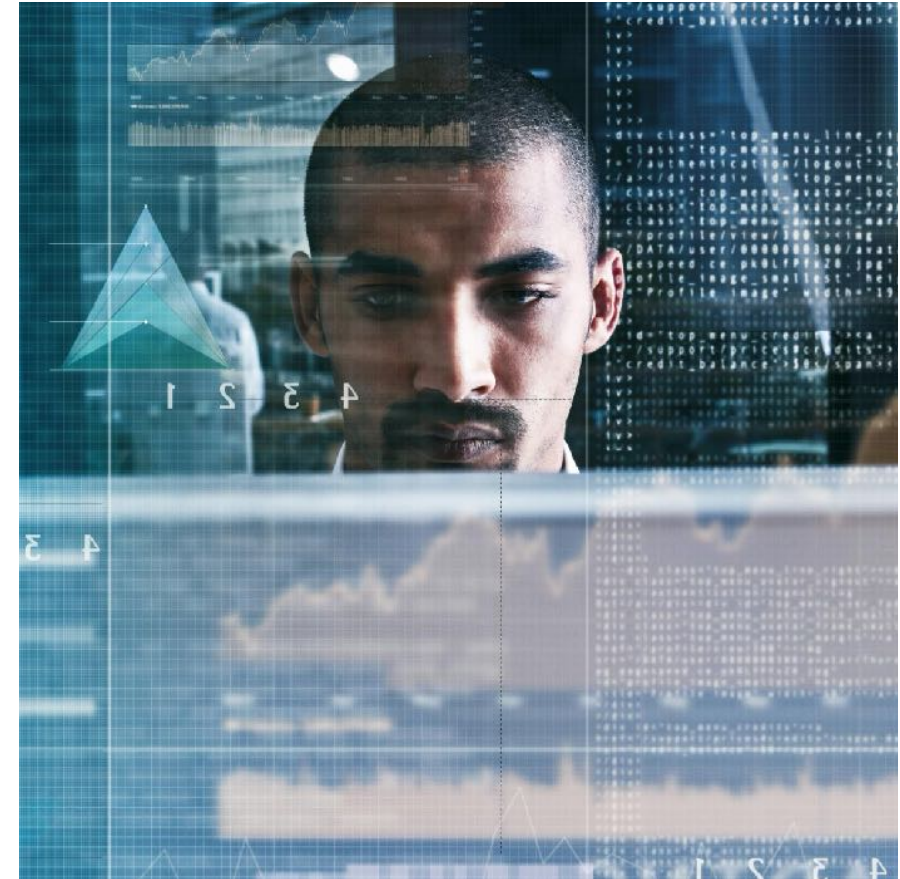
# Artificial Intelligence: Can be a game changer

- Is Artificial Intelligence new?
- Proliferation of Artificial Intelligence
- Risks with this technology
- Importance of a careful approach



# Generative AI vs Traditional AI

- Generative AI creates new content
- Examples include text generation, image creation, report or summary information
- Traditional AI focuses on specific tasks & provides insights and model variables are generally focused on specific use cases.



# DEEP LEARNING MODELS IN AI

- Significant role in artificial intelligence
- Capable of processing large amounts of data and millions of variables
- Can simulate the human brain's process and neural networks with complex layers of logic and reasoning
- Enhances the results of machine learning



# Data Processing Capabilities

- Handle vast datasets efficiently
- Improve accuracy and performance of AI systems

## Deep Learning Models

- Convolutional neural networks (CNNs) used for image recognition and processing.
- Deep reinforcement learning - is used for robotics & game playing.
- Recurrent neural networks (RNNs) - used for natural language processing and speech recognition.





# DEPLOYMENT OPTIONS

## Hosted AI

- AI services provided by third-party vendors
- Hosted on third-party servers
- Is usually connected to provider models & data

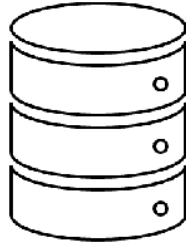
## Connected AI

- AI systems integrated with other systems
- Connected with various devices
- May be connected to provider models & data

## On-Prem AI

- AI solutions deployed on organization's infrastructure





## Supervised Models

Trained on labeled data  
Used to make predictions  
Often called pre-trained models using  
known good data sets.



## Unsupervised Models

Identify patterns in unlabeled data  
Discover relationships within data  
Often trained on actual user data with a bias  
towards that data set.



# TRAINING AND LEARNING MODELS

## Continuous Learning AI Systems

AI systems that continuously learn and adapt from new data as it is ingested or scanned

## Managed Training-Based Machine Learning

AI models trained on a specific dataset at specific times

Do not change after deployment unless the model is retrained or additional training is completed

Which one is better for IM and Classification?





# PERFORMANCE METRICS

## Accuracy

- Proportion of correct predictions made by the model

## Precision & Recall

- Metrics to evaluate the performance of classification models

## False Positive Tuning Capabilities

- Ability to adjust the model to reduce false positives



# PROVIDER CONCERNS

## Support Availability

- Technical support from the AI provider

## Vendor Data Access

- Policies on provider's access to organization's data

## Reporting Feedback

- Mechanisms for feedback on AI system's performance and accuracy

## IM concerns?



# DATA CONSIDERATIONS

## Trained on Your Data

- AI models trained on the organization's own data

## Shared Data

- Data shared between multiple organizations for training AI models

## Open Source Data Sets

- Publicly available datasets used for training AI models

## Privacy

Ensuring the protection of sensitive data

## Rights & Copyrights to Data Sets

- Legal considerations regarding the use of data

Organizational data is often biased and targeted sets may take the bias further



# AUTOMATION, REPORTING & ALERTS

These are essential benefits of AI... they need transparency and configuration options and retention policies on the output

## Automation

Make sure you aware of the AI automation tasks and processes (Auto delete, label or classification)

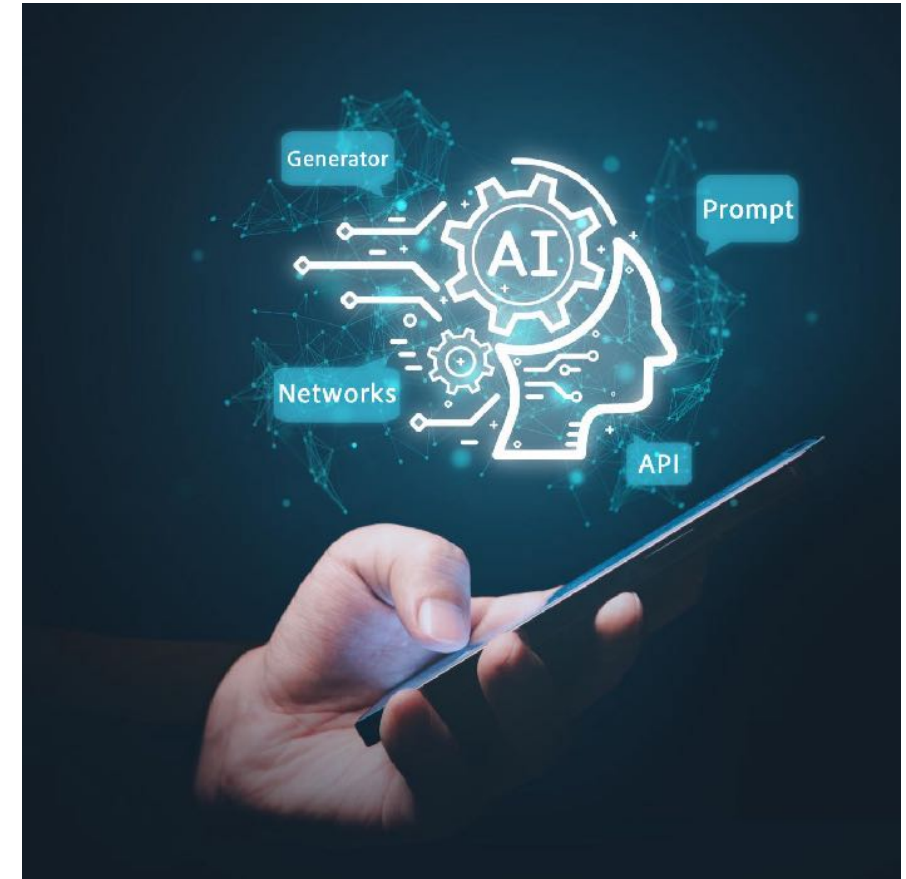
## Reporting

Creating reports or new information based on AI-driven analysis is essential.

## Alerts

AI systems can trigger notifications or actions based on specific conditions found. How do they work and get managed? Are their actions monitored?

Who configures, owns, QC's & sets retention on these?



# Deploying AI is Complicated ...

## What's your strategy?





# Office Manual SOURCES OF CONTENT

What you need to  
know to do your job.

Decisions made **OUTSIDE**  
your organization

Decisions made **INSIDE**  
your organization

## EXTERNAL AUTHORITIES

Statutes  
Regulations  
Court Cases  
Governing Bodies

## OTHER SOURCES

International Standards  
Technical Limitations  
Science  
Facts

## FOUNDATIONAL DOCUMENTS

Mission | Vision | Values  
Principles | Strategies  
Governance  
Lexicon

## INTERNAL AUTHORITIES

Policies  
Standards  
Procedures  
Forms

## EXPERTISE

Analysis  
Instruction  
Illustrations  
Advice



# AI POLICY

## Interpretation

“Information” includes both structured and unstructured data and metadata in all formats  
**and includes the output of AI systems.**

# AI Policy

1. The organization commits to the responsible and ethical use of AI technologies.
2. The CDIO has the authority to approve standards and procedures for AI applications related to:
  - life-cycling the input and output text
  - parameters around training
  - procedures for validation and quality assurance



*Which of the considerations discussed today  
are the most relevant for IM professionals in  
an environment implementing generative AI?*

# THANK YOU!



Lewis Eisen

<https://www.linkedin.com/in/lewiseisen/>



Michael Landau

<https://www.linkedin.com/in/michaellandau1/>

